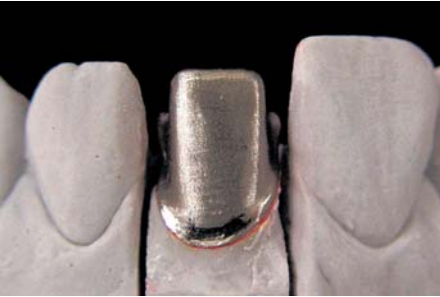
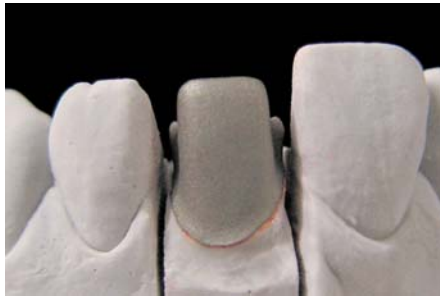


Noritake

Super Porcelain **EX-3**



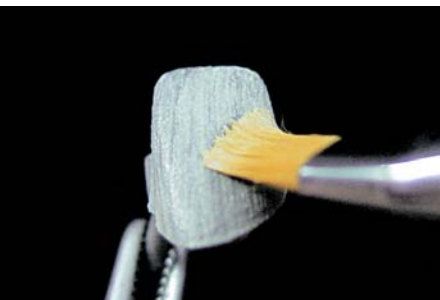
1. Metalin ayarlanması



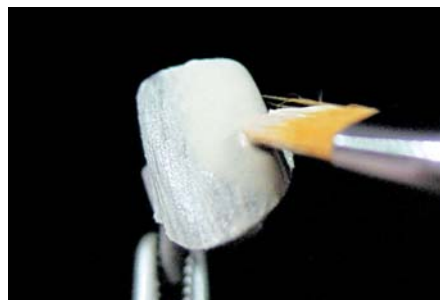
2. Gaz Alma işlemi (Degassing)



3. Pasta Opak uygulaması



4. PO 1. uygulama (ıslak)



5. PO 1. uygulama (Normal)



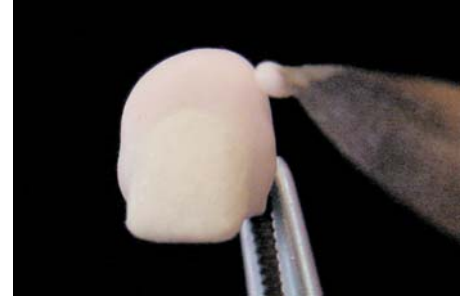
6. Opak içeriye bulaşmamalıdır



7. PO 2. uygulama



8. PO Modifier uygulaması



9. Servikal uygulaması



10. Dentin Yüklemesi



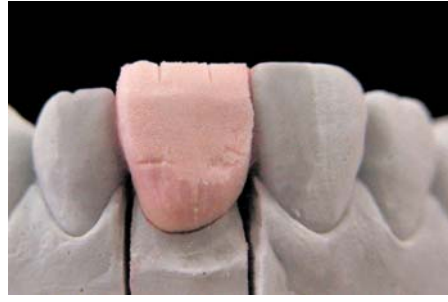
11. Dentin yüklemesinin bitimi



12. Çizgilerin oluşturulması



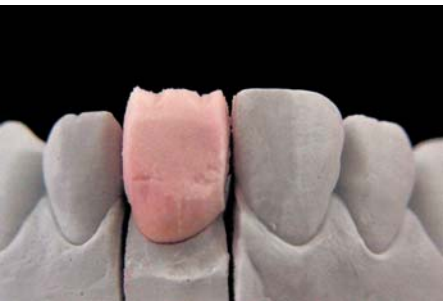
13. 1/3 Insizal'in küçültülmesi



14. 1/3 orta alanın küçültülmesi



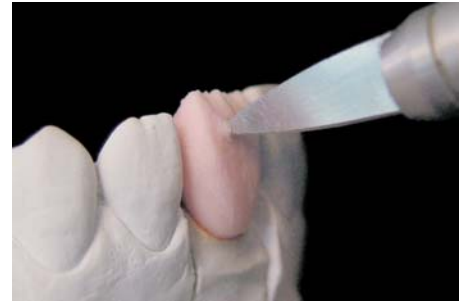
15. Aproximallerin küçültülmesi



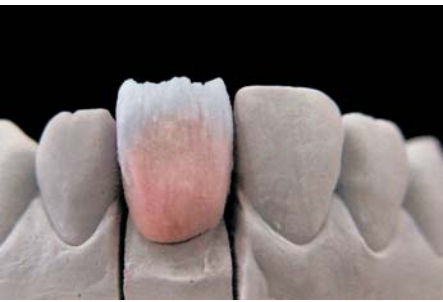
16. Mamelon Yapısı



17. Mamelon Yapısı



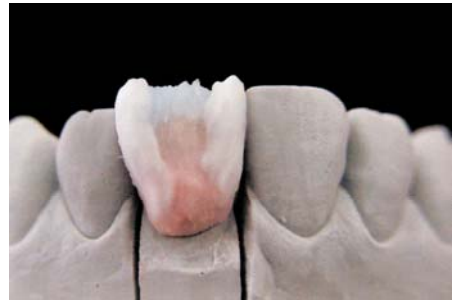
18. Dentin kalınlığı (>0.8mm)



19. Şeffaf yüklemesi



20. Lingualde şeffaf olmamalıdır



21. Transpa yüklemesi



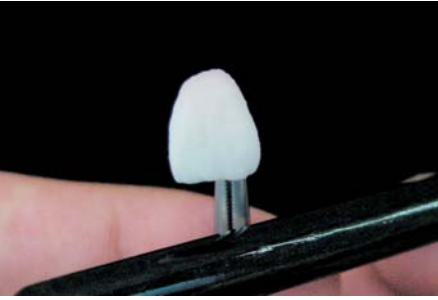
22. Transparent yüklemesi
(%10 daha büyük)



23. Lingual yüze Transparent yüklemesi



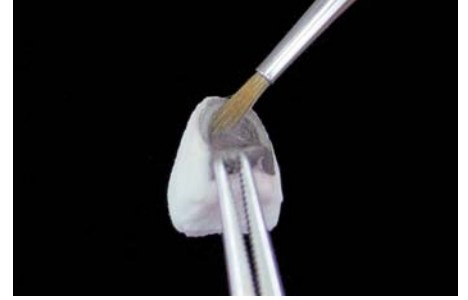
24. Aproksimallere
Transparent yüklemesi



25. Kondensasyon



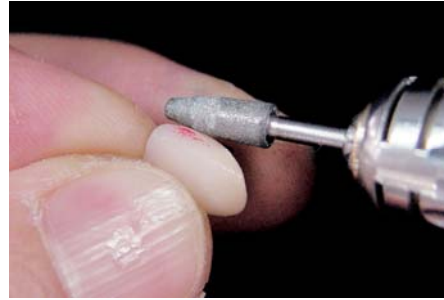
26. Bitim



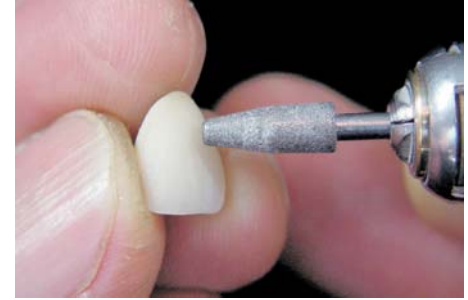
27. Opak içeriye bulaşmamalı



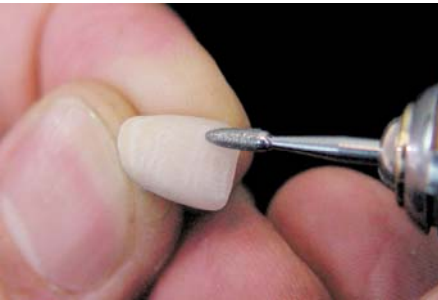
28. 1. Pişim / Parlak yüzey
görüntüsünün
görüntüsü



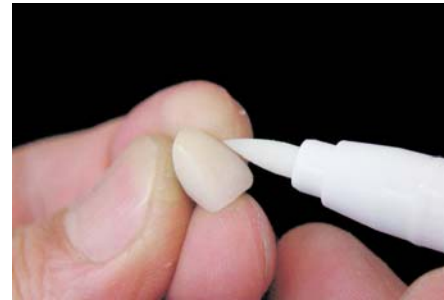
29. Kontakt noktalarının
ayarlanması (DP-05)



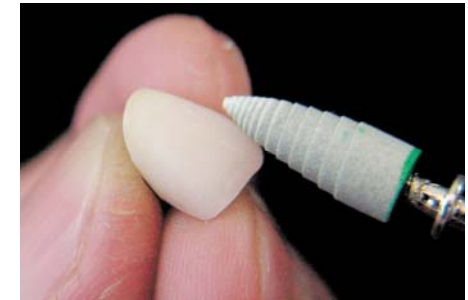
30. Oluk(kanal)
oluşturulması



31. Küçük detay çizgiler(DP-02)



32. Detail-Checker ile kontrol



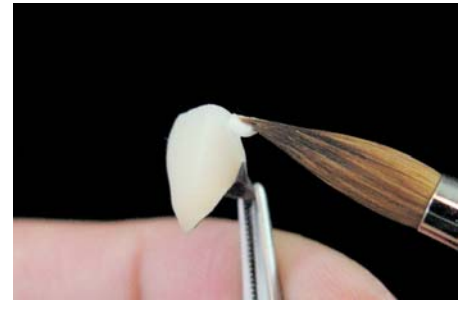
33. Meister Cones ile polisaj



34. Pearl Surface C ile parlat



35. Glazürden sonra Pearl Surface F



36. Add-on tamir



Master Ceramist Kazunobu Yamada tarafından gerçekleştirilmiş Novosibirsk kurs programında yapılan çalışma

Noritake EX-3 hakkında ilave bilgiler

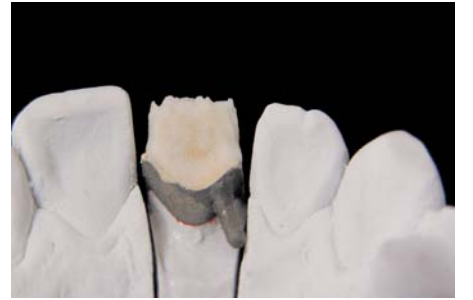
Opak Dentin



1. Opak Dentin uygulaması(0.3mm)



2. Yüklemenin bitirilmesi



3. Lingual yüz



4. Pişimden sonra

Luster Porselen



1. T-Blue (köşelere) ve LT0(Mamelon)



2. Creamy Enamel



3. LT1



4. CCV-1 / CCV-2



5. Bitim



Noritake Türkiye Distribütörü: TURKUAZ Özel Diş Hekimliği Hizmetleri, İth., İhr. San. Ve Tic. Ltd. Şti

1379 Sok. No:10 K:3 D:5 Veysi Apt. Alsancak, İzmir/TR | T: +90 (232) 464 06 66

F: +90 (232) 464 28 88 | e-mail: info@turkuazdental.com | web: www.turkuazdental.com