

Recipes for Creating Beautiful Smiles



The Recipes

The Perfect Collaboration

3M ESPE is a leader in groundbreaking restorative technologies. 3M ESPE's constant dialogue with dental professionals and the strength of 3M's research and development help drive continuous innovations for its products, making it one of the most trusted names in the dental industry.

3M ESPE's Filtek™ Ultimate Universal Restorative is ideal for creating natural aesthetics. It offers a system that is simple enough to create beautiful, uncomplicated restorations using a single shade, but its versatility allows the dentist to expand to a dual shade or a more extensive multi-layering technique when desired. A true nanocomposite, Filtek Ultimate Universal Restorative delivers exceptional handling, lasting polish and outstanding strength in the anterior and posterior.

Styleitaliano is a collaboration of recognized specialists with a passion for composites. Their goal is to teach dentists a simplified composite layering technique without compromising quality or aesthetic results.

Styleitaliano members are experts in color, materials and conservative dentistry. Their philosophy involves creating recipes, using a top quality composite, and training dentists in a simple, reproducible, consistent technique that will bring excellent aesthetics to their everyday dentistry.

3M ESPE is excited to collaborate with Styleitaliano to provide dentists with the materials and expertise that enhances the art of dentistry worldwide.



The Recipes – Filtek™ Ultimate Universal Restorative

The Styleitaliano method is designed to mimic the three dimensional appearance of natural teeth where the chroma comes from within the dentine core and shines through the translucent enamel layer. Using the dentine and enamel opacities of Filtek™ Ultimate Universal Restorative, recipes were created following this natural aesthetic design. Because the enamel layer modifies the color of the dentine core, its thickness has been standardized in the recipes – for Filtek Ultimate Universal Restorative, 0.5mm turned out to be the ideal value for anterior restorations. The recipes were also created to match the VITAPAN® Classical Shade Guide.

Styleitaliano Color Recipes:

- W Dentine + A2 Enamel = A0
- A1 Dentine + A3 Enamel = A1
- A2 Dentine + A3 Enamel = A2
- A3 Dentine + A3 Enamel = A3
- A4 Dentine + A3 Enamel = A3.5
- A4 Dentine + A4 Body = A4



Shade A0 is not a part of the VITAPAN® Classical shade guide.





Prof. Angelo Putignano

“ We believe that conservative dental procedures don't have to compromise on aesthetics. Our goal is to teach dentists a simplified composite layering technique, using only two shades, that any dentist can carry-out, using our well researched shade recipes. ”

A handwritten signature in black ink, appearing to read 'Angelo Putignano'.

Creating

Dr. Walter Devoto

“ 3M ESPE is the perfect partner to advance the StyleItaliano philosophy. They have a hunger for top-quality dental education. They have a never-ending desire for research and development and are the recognized leader in nanocomposites. Filtek™ Ultimate Universal Restorative is the perfect product to use with our layering technique to produce beautiful restorations. ”

A handwritten signature in black ink, appearing to read 'Walter Devoto'.

Beauty



Focus Case: Class IV Composite Restoration

Initial Situation

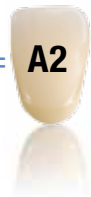


Case study:

- 1 Adult patient dissatisfied with old composite restorations on maxillary incisors.
- 2 Shade selection using the Vitapan® Classical Shade Guide resulting in shade A2.
- 3 Removal of the restorations and preparation of the bevel with a diamond bur.

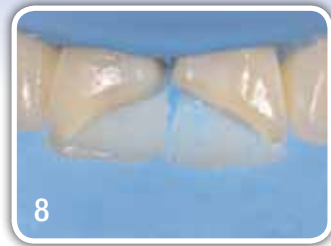
Filtek™ Ultimate Universal Restorative Recipe

A2 Dentine + **A3** Enamel = **A2**



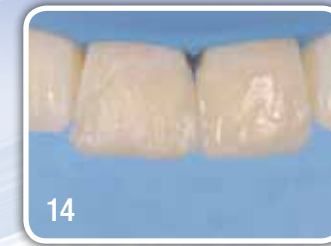
- 4 Silicone guide created according to the wax-up fabricated in the lab. Limits of the restorations are recorded with a sharp instrument (e. g. LM-Arte Fissura).
- 5 Note the inscribed limits of the restorations.
- 6 Placement of the palatal layer, A3 Enamel.
- 7 After the bonding procedure, the silicone guide with palatal enamel layer is placed into position.

Focus Case: Class IV Composite Restoration



Case study:

- 8 Palatal enamel layer in place after curing.
- 9 Restoration of the proximal walls with A3 Enamel.
- 10 Palatal and proximal walls restored with A3 Enamel.
- 11 Placement of the A2 Dentine. Creation of the 0.5mm space for the enamel layer is facilitated with an appropriate instrument (e.g. LM-Arte Misura).



- 12 Creation of the mamelons.
- 13 Dentine layer in place after curing.
- 14 Application of the facial layer, A3 Enamel, with a predefined thickness of 0.5mm.



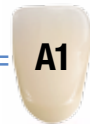
Semi-Direct Composite Veneer

Initial Situation



Filtek™ Ultimate Universal Restorative Recipe

A1 Dentine + A3 Enamel = A1



Case study:

- 1 Misaligned lateral incisor.
- 2 Palatal view.
- 3 After cleaning the tooth, the first layer of A1 Dentine is applied. Mamelons are created and the composite is cured.
- 4 A 0.5mm layer of A3 Enamel is applied and light-cured.
- 5 The veneer is gently removed with a fine instrument (e.g. LM-Arte Eccesso), then finished and polished.
- 6 Cementation of the veneer and removal of excess.

Good to know

- An excellent solution when one wants to achieve optimum results in a single appointment.
- Allows one to re-evaluate the shape, and to finish and polish the restoration much more accurately.



Final Restoration

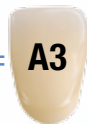
Indirect Composite Veneers

Initial Situation



Filtek™ Ultimate Universal Restorative Recipe

A3 Dentine + A3 Enamel = A3



Case study:

- 1 Abrasion of maxillary incisors in adult patient.
- 2 Wax design prepared in the lab after preliminary impression.
- 3 A guide from the waxing will help reconstruct the incisal edges (A3 Dentine).
- 4 Result of direct reconstruction using A3 Dentine. Final impression is now taken.
- 5 Veneers created in the lab with Filtek™ Ultimate Universal Restorative following the recipe: A3 Dentine and A3 Enamel.
- 6 Cementation of the veneer and removal of excess.

Good to know

- Indirect composite veneers are an excellent alternative to porcelain veneers, especially in patients with dysfunctional occlusion. This technique allows corrections or, if necessary, repair over time.
- In this case no tooth preparation was needed.
- The dental technician can use Filtek™ Ultimate Universal Restorative for the lab created veneers, simplifying the color selection.
- Recommendation: roughen the inner surface of the veneer and always condition the natural enamel with orthophosphoric acid as part of the cementation process.



Final Restoration

Class III and IV Composite Restorations

Initial Situation



Case study:

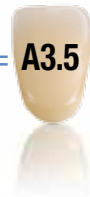
- 1 Adult patient with old, stained composite restorations.
- 2 Margins of the preparations are carefully polished with a silicone rubber cone.
- 3 Palatal view of the preparation. Silicone guide cannot be prepared in this case.
- 4 After bonding procedure, A4 Dentine is applied carefully to leave enough space for the 0.5mm enamel layer. Note convex matrix defining the mesial contour and contact.
- 5 The A3 Enamel layer is placed and finishing begins with a multi-blade finishing bur, ideal for Filtek™ Ultimate Universal Restorative.

Good to know

- In Class III restorations, it is recommended to make a long vestibular bevel with a bur. The edges have to be polished perfectly with disks or rubberized cones.
- The convex matrix is ideal for managing a good contact point.

Filtek™ Ultimate Universal Restorative Recipe

A4 Dentine + A3 Enamel = A3.5



Final Restoration

Class III Composite Restoration

Initial Situation



Case study:

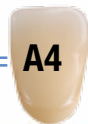
- 1 Adult patient with fractured restoration on central incisor and discolored composite on lateral incisor.
- 2 Shade selection with the A3 and A4 shade tabs made from Filtek™ Ultimate Universal Restorative using the “My Shade Guide Mini Kit – Smile Line” (for more details see next page).
- 3 The A4 shade is chosen as the best match.
- 4 Final preparation prior to bonding procedure.
- 5 Placement of the A4 Dentine layer, leaving place for the 0.5mm Body layer.
- 6 Placement of the inter-proximal matrix followed by the restoration of the distal wall of the central incisor and application of the final layer, A4 Body.

Good to know

- The individual shade tabs made from Filtek™ Ultimate Universal Restorative according to the StyleItaliano recipes and layering technique help you make the right shade selection and achieve consistent aesthetic results.
- In order to obtain a good contact point it is recommended to, first, restore one tooth and finish inter-proximally with an abrasive strip. Then restore the second tooth after inserting the second matrix and wooden wedge in the inter-proximal space.
- The ideal consistency of Filtek Ultimate Universal Restorative helps position the dentine shade without the use of a matrix.

Filtek™ Ultimate Universal Restorative Recipe

A4 Dentine + A4 Body = A4



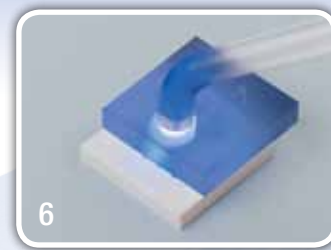
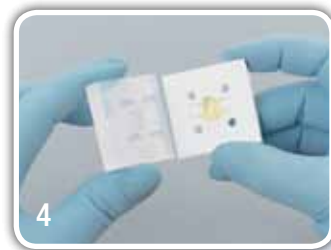
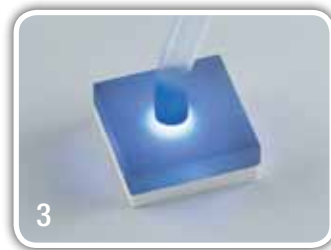
Final Restoration

Step-by-step to your individual shade guides

My Shade Guide Mini Kit



Please see the user instructions and safety information of the manufacturer.



Procedure:

- 1 Apply a thin layer of enamel, according to your chosen recipe.
- 2 Place the transparent mould on top and apply pressure.
- 3 Light cure through transparent mould for 20 seconds.
- 4 Enamel layer with a thickness of 0.5mm.

- 5 Apply the dentine layer, according to your chosen recipe.
- 6 Place the transparent mould on top and light cure.
- 7 Remove composite tab from the mould.
- 8 Finish and polish the composite tab.
- 9 Apply a drop of glue and bond a pin on the tab.
- 10 Completed shade tab.

StyleItaliano recommends:

- Filtek™ Ultimate Universal Restorative from 3M™ ESPE™ www.3MESPE.com
- My Shade Guide Mini Kit from Smile Line www.smileline-by-styleitaliano.com
- ARTE Instruments from LM www.lminstruments.com

Clinical case study photos courtesy of StyleItaliano.



3M ESPE

3M Deutschland GmbH
Location Seefeld
3M ESPE - ESPE Platz
82229 Seefeld - Germany
info3mespe@mmm.com
www.3MESPE.com

3M, ESPE and Filtek are trademarks of 3M Company or 3M Deutschland GmbH. Used under license in Canada.

Vitapan® is a registered trademark of Vident.

All other trademarks are owned by other companies.

© 2013, 3M. All rights reserved.