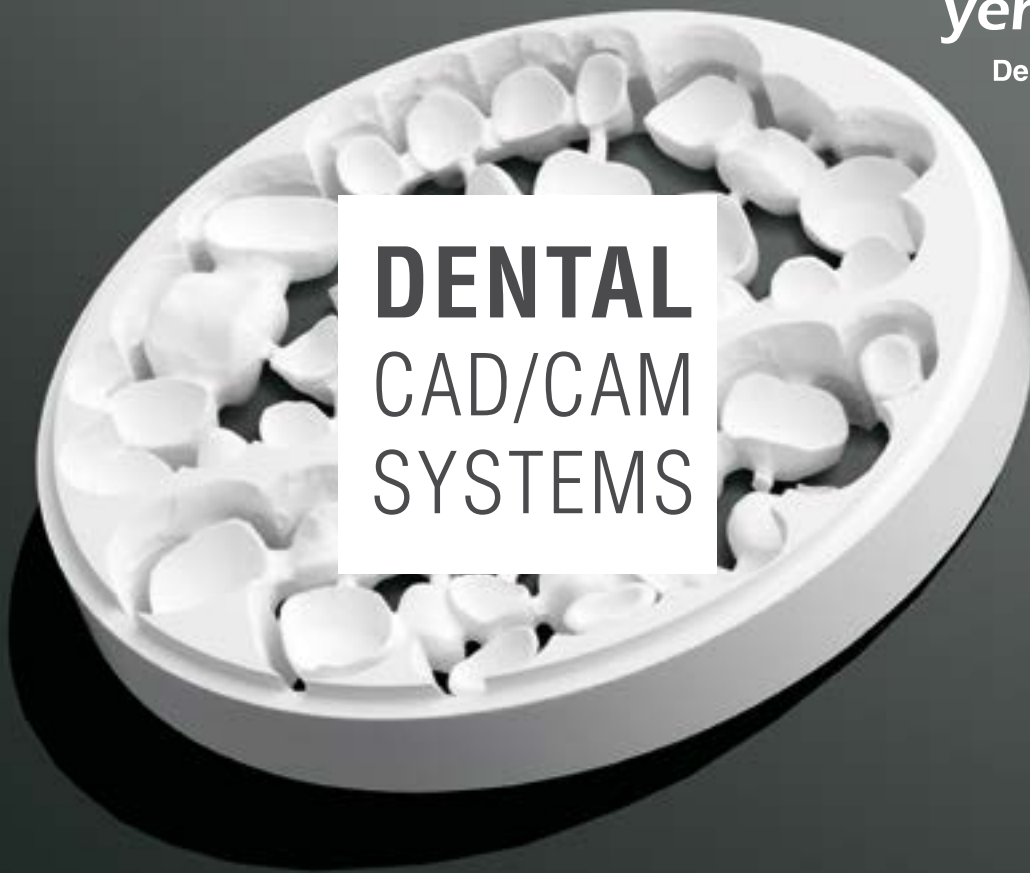
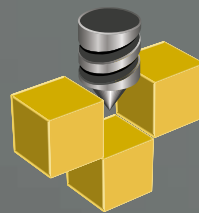


D10 D14 D15 D43 D40 D40M DC40  
PMMA Zirconia Ceramics CrCO Titanium



**DENTAL**  
CAD/CAM  
SYSTEMS



**yenadent**

Dental CAD/CAM  
SYSTEMS

yenadent provides **open** cad cam system to the world dental market

D10 D14 D15 D43 D43B D40 D40M DC40

Over 600 Machines have been installed in the following countries:

TURKEY - GERMANY - ITALY - FRANCE - NETHERLANDS - BELGIUM - U.S.A  
CANADA - ENGLAND - RUSSIA - ROMANIA - ALBANIA - BRASIL - ISRAEL  
KOSOVO - CHINA - AUSTRIA - S. KOREA - MACEDONIA - SERBIA - LEBANON  
JORDAN - SAUDIA ARABIA - SOUTH AFRICA - POLAND - GEORGIA -  
SWEDEN - NORWAY - DENMARK - EGYPT - CYPRUS - GREECE - AZERBAYCAN  
MEXICO - CROATIA - INDIA - CHILE - VENEZUELA - VIETNAM - U.A.E. DUBAI  
SLOVAKIA - HUNGARY - AUSTRALIA - SLOVENIA - PHILIPPINES



Yena was established in 1996 and produces CNC systems for more than 15 years including dental cad/cam systems and solutions.

Yena produced more than 600 machines for dental market until today.





# 3D

Zircon  
Wax  
PMMA  
Ceramic

## Technical Info :

Movements : 200 x 100 x 70 mm  
Number of axis : 4  
Control : High Speed YC  
Axis motors : AC Servo 100 W  
Spindle power : 1.3 kW  
Spindle RPM : 60.000 rpm  
Number of blocks : 1 pcs  
Tool Change : 8 pocket  
Tool lenght switch : Standart  
Weight : 120 kg  
Dimensions : 60 x 62 x 70 cm

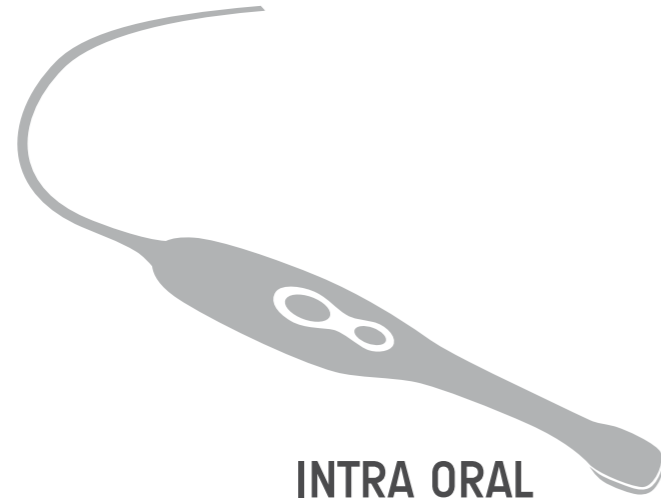
## Options :

Scanner with CAD

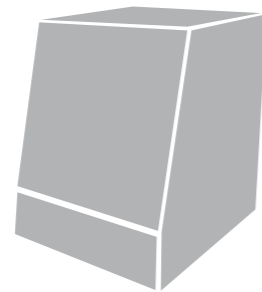
## Standart :

Work area light  
4 times tool changer  
Automatic tool lenght switch IP67  
AC servo motors  
Precision guides and ball screws  
Direct STL milling  
PC with i5 processor  
Touch screen  
Touch buttons  
High precision rotary drives





INTRA ORAL



IMPRESSION SCANNERS



Ceramics  
Full Contours Temporary crowns

# D10





# MILL

Zircon  
PMMA  
Ceramic  
Wax

## You can mill 140 units in 24 hours.

### Technical Info :

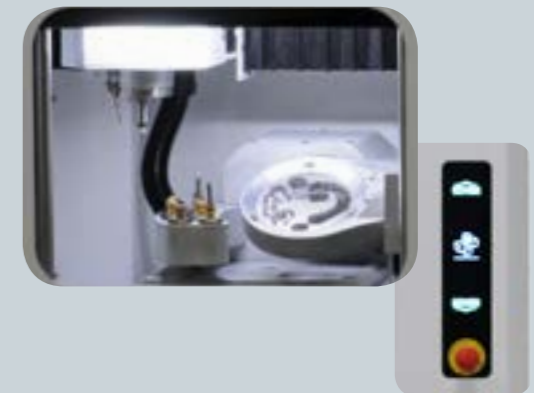
Movements : 200 x 100 x 70 mm  
Control : High Speed YC  
Number of axis : 4  
Axis motors : AC Servo 100 W  
Spindle power : 1.3 kW  
Spindle RPM : 60.000 rpm  
Number of blocks : 2 pcs  
Tool Change : 8 pocket  
Tool lenght switch : Standard  
Weight : 120 kg  
Dimensions : 60 x 62 x 70 cm

### Options :

Wet System  
Table  
Suction system.  
Scanner with CAD  
Furnace for zirconia sintering  
Touch screen

### Standard :

Work area light  
8 times tool changer  
Automatic tool lenght switch IP67  
AC servo motors  
Precision guides and ball screws  
Touch buttons  
High precision rotary drives  
Notebook with i7 CPU  
CAM Software







# Titan 4D

Titan  
Zircon  
PMMA  
Ceramic  
Wax

## Technical Info :

Movements : 200 x 100 x 70 mm  
Control : High Speed YC  
Number of axis : 4  
Axis motors : AC Servo 100 W  
Spindle power : 1.3 kW  
Spindle RPM : 60.000 rpm  
Number of blocks : 1 pcs  
Tool Change : 8 pocket  
Tool lenght switch : Standard  
Weight : 120 kg  
Dimensions : 60 x 62 x 70 cm

## Options :

Table  
Suction system.  
Scanner with CAD  
Furnace for zirconia sintering  
Touch screen

## Standard :

Wet System  
Work area light  
8 times tool changer  
Automatic tool lenght switch IP67  
AC servo motors  
Precision guides and ball screws  
Touch buttons  
High precision rotary drives  
Notebook with i7 CPU  
CAM Software





# 510

Zircon  
PMMA  
Wax  
CrCo  
Ceramic\*  
Titanium\*

\*with wet option

### Technical Info :

Movements : 200 x 100 x 70 mm  
Number of axis : 5  
Control : High Speed YC  
Axis motors : AC Servo 100 W  
Spindle power : 1.3 kW  
Spindle RPM : 60.000 rpm  
Number of blocks : 1 pcs  
Tool Change : 8 pocket  
Tool lenght switch : Standart  
Weight : 120 kg  
Dimensions : 60 x 62 x 70 cm

### Options :

Wet System  
Suction system.  
Scanner with CAD  
Furnace for zirconia sintering  
Touch screen

### Standard :

Work area light  
4 times tool changer  
Automatic tool lenght switch IP67  
AC servo motors  
Precision guides and ball screws  
Touch buttons  
High precision rotary drives  
Notebook with i7 CPU  
CAM Software





# D43

Zircon  
Wax  
PMMA  
Ceramic  
CrCo  
Titanium  
Model

## Technical Info :

Movements : 400 x 230 x 130 mm  
Control : High Speed YC  
Axis Numbers : 5 Axis  
Axis motors : AC Servo 400 W  
Spindle power : 1.3 kW  
Spindle RPM : 60.000 rpm  
Number of blocks : 1 pcs  
Tool Change : 14 pcs  
Tool lenght switch : Standart  
Weight : 310 kg  
Dimensions : 80 x 67 x 160 cm

## Standard :

Wet system  
Work area light  
14 times tool changer  
Automatic tool lenght switch IP67  
AC servo motors  
Precision guides and ball screws  
Control PC  
Touch screen  
High precision rotary drives  
Table  
Holder for ceramic machining  
Quick holder change

## Options :

2.5 kW 60.000 RPM Spindle  
Suction system.  
Scanner with CAD  
Furnace for zirconia sintering  
CAM software





# D43B

Titanium  
CrCo  
Zirconia  
Ceramic  
Wax  
PMMA

## Technical Info :

Movements : 300 x 200 x 130 mm  
Number of axis : 4  
Control : High Speed YC  
Axis motors : AC Servo 400 W  
Spindle power : 1.3 kW  
Spindle RPM : 60.000 rpm  
Number of blocks : 1 pcs  
Tool Change : 6 pcs  
Tool lenght switch : Standart  
Weight : 310 kg  
Dimensions : 80 x 67 x 160 cm

## Options :

2.5 kW 60.000 RPM Spindle  
Quick holder change  
Suction system.  
Scanner with CAD  
Furnace for zirconia sintering

## Standard :

CAM System  
Wet System  
Work area light  
7 times tool changer  
Automatic tool lenght switch IP67  
AC servo motors  
Precision guides and ball screws  
Control PC  
Touch screen  
Harmonic drive  
Table





# 040

Zircon  
Wax  
PMMA  
Ceramic  
CrCo  
Titanium  
Model

## Technical Info :

Movements : 400 x 280 x 140 mm  
Control : High Speed YC  
Axis motors : AC Servo 400 W  
Spindle power : 1.3 kW  
Spindle RPM : 60.000 rpm  
Number of blocks : 1 pcs  
Tool Change : 14 pcs  
Tool lenght switch : Standart  
Weight : 440 kg  
Dimensions : 100 x 78 x 166 cm

## Options :

2.5 kW 60.000 RPM Spindle  
Holder for ceramic machining  
CAM software  
Suction system  
Scanner with CAD  
Furnace for zirconia sintering  
Quick holder change

## Standart :

5 Axis  
Wet system  
Work area light  
14 times tool changer  
Automatic tool lenght switch IP67  
AC servo motors  
Precision guides and ball screws  
Control PC  
Touch screen  
Harmonic drive  
Table





# M070

Model  
Zircon  
PMMA  
Wax

More than 24 Full arch model  
in one setup.

### Technical Info :

Movements : 400 x 280 x 140 mm  
Number of axis : 5  
Control : High Speed YC  
Axis motors : AC Servo 400 W  
Spindle power : 1.3 kW  
Spindle RPM : 60.000 rpm  
Number of blocks : 2 pcs  
Tool Change : 10 pcs  
Tool lenght switch : Standart  
Weight : 440 kg  
Dimensions : 100 x 78 x 166 cm

### Options :

Suction system  
Scanner with CAD  
Furnace for zirconia sintering  
CAM Software

### Standart :

Work area light  
10 times tool changer  
Automatic tool lenght switch IP67  
AC servo motors  
Precision guides and ball screws  
Control PC  
Touch screen  
Harmonic drive  
Model Table  
Zircon Milling attachment (2 blocks)





# DOC40

Designed for  
Abutment Milling

## Technical Info :

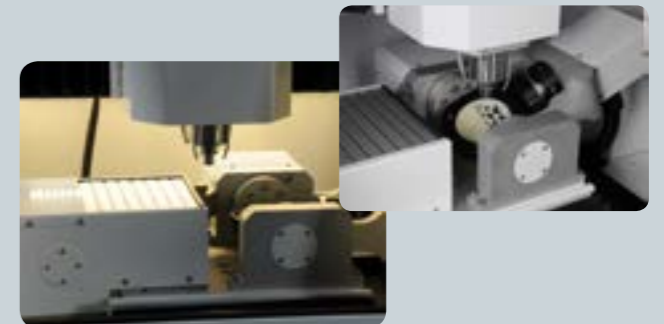
Movements : 400 x 280 x 140 mm  
Number of axis : 5  
Control : High Speed YC  
Axis motors : AC Servo  
Spindle power : 6.5 kW  
Spindle RPM : 45.000 rpm  
Number of blocks : 1 pcs  
Tool Change : 12 pcs  
Tool lenght switch : Standart  
Weight : 800 kg  
Dimensions : 100 x 78 x 175 cm

## Options :

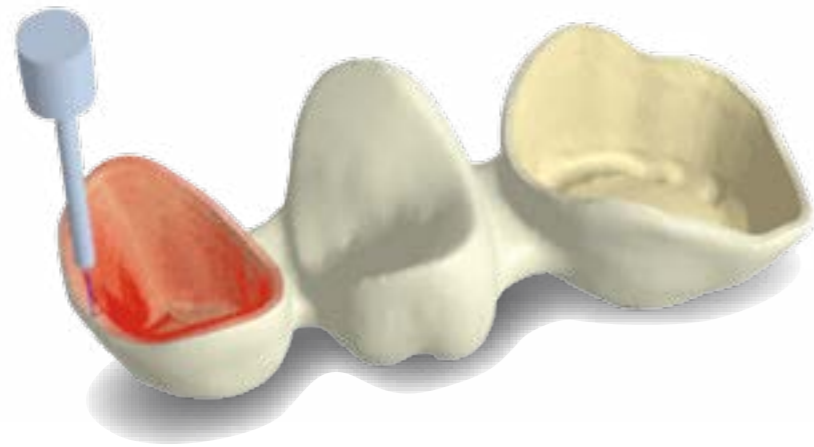
CAM Software  
Scanner with CAD  
Furnace for zirconia sintering

## Standart :

Quick holder change  
Heidenhain liner scales  
Casting body  
Wet system  
Work area light  
12 times tool changer  
Automatic tool lenght switch IP67  
AC servo motors  
Precision guides and ball screws  
Control PC  
Touch screen  
Harmonic drive  
Table  
Touch buttons  
BD High precision tool holders







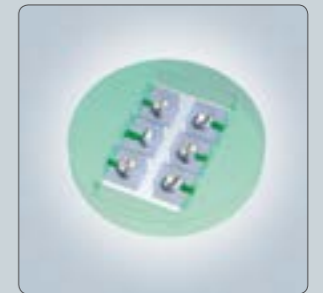
# Yenadent CAM axis<sup>4</sup>

## Features :

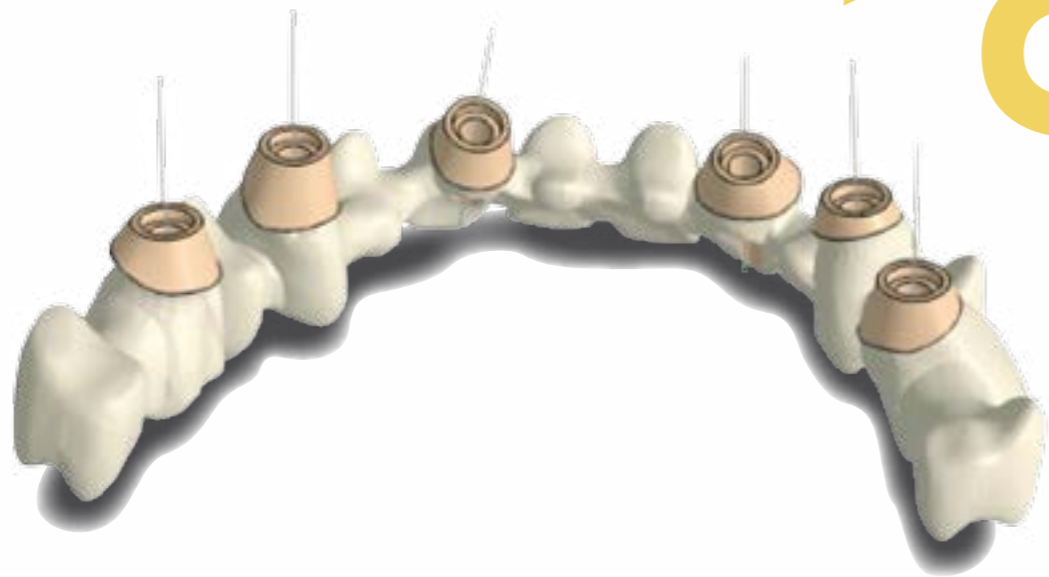
- Partially milled disk management
- Automatic fitting area recognition with high definition milling
- 4 axis milling
- Dedicated Zircon productions tools (sintering connectors, pins...)
- Metal milling optimisation
- Ready to use milling strategies
- Double side attachment for space optimisation (allow to produce 50 units per disk)
- Space optimisation with stl inclination (minimize blank thickness)
- Production report
- Toolpath creation Autocheck.
- Toolchanger management automatic air activation coolant.

## Custom Management :

- Machine library
- Strategy library
- Blanklibrary (Cube, Cylinder, Disk, and user define blank)







# Yenadent CAM axis<sup>5</sup>

## Additional Features :

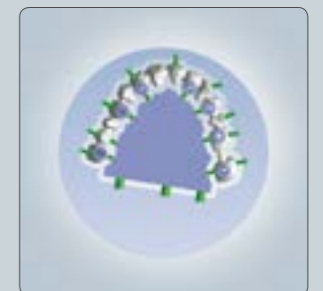
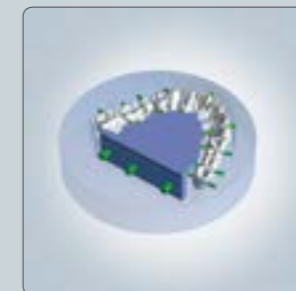
5 axis version get all the benefits of Standard version with additional rotary axis management. yenadent CAM allow to detect automatically best milling angle for each crowns and also multiple milling axis on bridges. This is automatic. Yenadentcam allow also with the 5 axis module to incline a long bridge in order to insert it in smaller block and then mill it incline along insert axis. Also yenadent CAM 5 axis is a true 5 axis software with real 5 axis milling toolpaths.

- Automatic Best angle 5 axis milling (3 + 2 axis)
- Full Shape inclination (3 + 2 axis)
- True 5 axis

## Abutments Milling :

Abutment milling has been developed in partnership with abutment manufacturer in order to optimize production. It is available for metal milling and zircon milling with dedicated milling parameters. By using a combination of 5 axis drilling and milling it can produce any shapes. yenadent CAM define a simple interface with automatic features to prepare the production. You will then generate toolpath in 3 checking steps.

- Axis detection
- Automatic geometrical area recognition with high resolution milling
- Depth drilling definition
- Internal / External Hexagon





# Yena SCAN 3

The YenaScan 3 is a compact and affordable scan and design solution that is ideal for small and medium dental laboratories. Powered by DWOS, the YenaScan 3 delivers a complete.

Flexibility, affordability and power all in one package As users needs evolve, the 3 Series can evolve with them. The scanner is compatible with most DWOS modules. The YenaScan 3 can be delivered with several pre-installed configurations, the software module is provided free of charge. All other software modules can be added when needed. This modularity provides Yenadent users with the ultimate flexibility so that labs can embrace CAD/CAM technology at their own pace.

#### **Benefits :**

"A la carte" configuration means you buy only what is needed. Being part of the digital design and manufacturing trend, with minimal capital equipment costs. Highly accurate scans within a relatively large scan volume of 90 mm x 90 mm x 90 mm. DHS enabled for optimized and secure communication with outsourcing centres. The YenaScan 3 uses the state-of-the-art multi-die scan and design capabilities (twelve copings scanned with unattended auto-margin and design generation in about ten minutes). NEW: Easy management of workflow for waxup duplication



# Yena SCAN 7

#### **State-of-the-art technology solution:**

The scanner's optical measuring head is composed of two high-speed cameras and one video-assisted camera which facilitates the speed of scan previews. Optimum accuracy and versatility are achieved by reducing the triangulation angles formed between the laser and the cameras. Superior resolution is obtained by reducing the field of view of high performance, last generation CMOS cameras. The scanner has five axes of freedom which provides superior accessibility within scanning volumes. What drives

#### **Ease of use with unprecedented performance:**

The YenaScan 7 defines a whole new class of 3D scanners that delivers unprecedented performance. The system comes with pre-installed DWOS software modules which include Crown & Bridge, Implant Custom Abutment, Virtual Model Builder and the Rapid-Prototyping and Manufacturing modules. The Partial Frameworks module is a compatible add-on option.

#### **Excellent accuracy:**

The YenaScan 7 delivers excellent marginal integrity and fit on a large variety of indications from a single preparation to full arch.

#### **Higher throughput:**

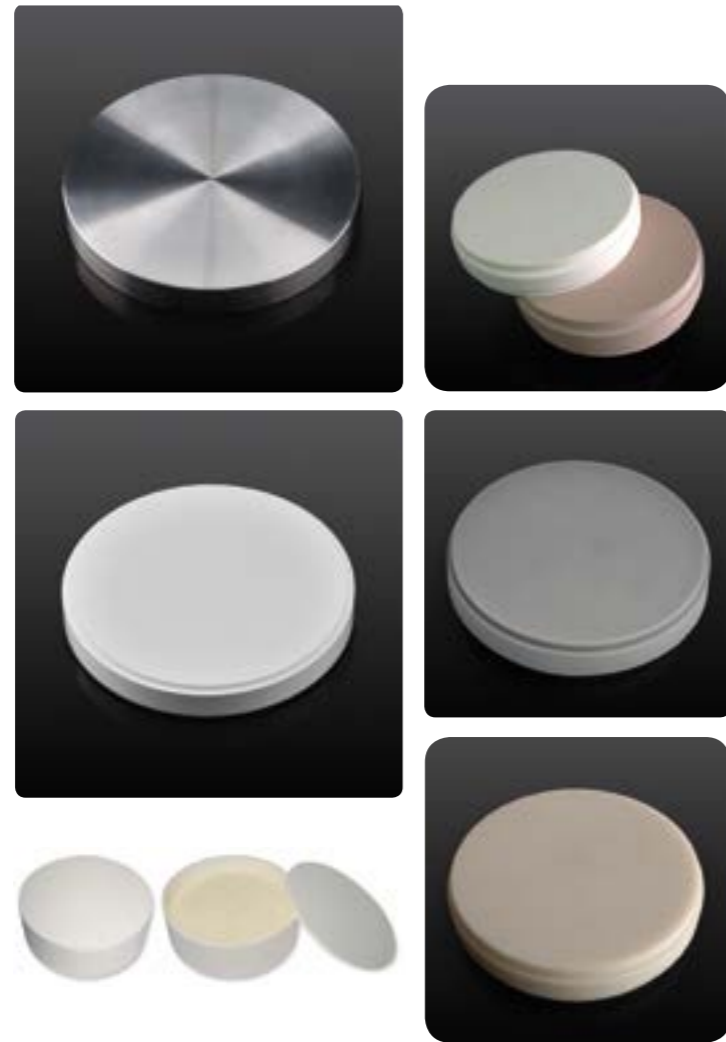
The new fully automatic scan and design multi-die application produces 30 final coping designs in about 15 minutes. Moreover, once the platform is loaded, the process is completely automated. When done with the 30 designs, end users simply review the final designs as part of their normal quality control procedures and make any desired modifications required by a doctor's prescription. No other scanner on the market is capable of this type of performance!

#### **Large scanning volume:**

The YenaScan 7 provides accurate results over a large volume (140 mm x 140 mm x 140 mm), which provides wider access for larger, fully articulated models.

#### **Scanning versatility:**

Built on the proven iSeries's negative scanning technology combined with five axes of freedom, the YenaScan 7 has access to the widest variety of scanning materials and indications, from single to full arch preparation on positive plaster models to lower anteriors on silicone-based impressions.



[www.yenadentshop.com](http://www.yenadentshop.com)

# CONSUMABLES

We offer different kind of consumables for customer needs:

**Blocks for cad cam systems:**

**Zircon Wax PMMA Ceramic CrCo  
Model Titanium**

**Cutting tools for:**

**PMMA Zircon Wax CrCo  
Titanium Ceramic**

Special tools for abutment milling

**We also offer:**

**Abutment Connectors  
Abutment Screws  
Analog**





# FURNACES

## Yenadent MOS 160 ELV:

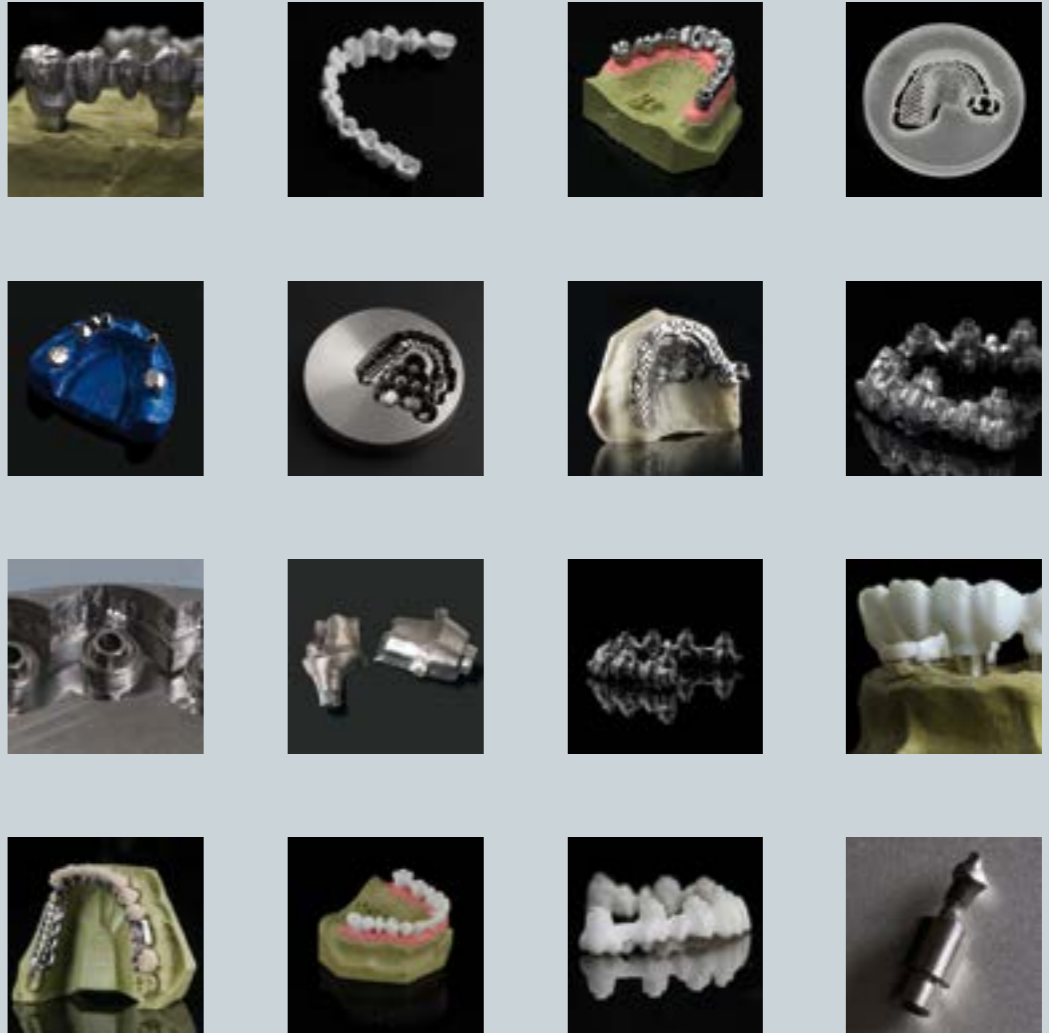
Yenadent MOS 160 ELV MOS160 ELV developed for firing of even upto 4 unit crowns in about 2 hours, cold to cold. ELV series have a 7 inch Touch Screen monitor as standard. Included 5 dedicated programmes covering almost all firing requirements and a Custom Programme ready to be applied as required .

- Heating elements are Kanthal Super quality, MoSi2
- 160-05 will use 2 trays, 160-1 will use 4 trays
- Furnace will have 6 programme capacity, one being reserved for Custom made programme.
- ELV-MOS series have a specific facility which enables the programme to continue after power restored. You can leave the furnace working and taking care of the programme chosen even at night time. This will give you some more efficiency, managing of 4-5 cycles per day.
- A graphic display of actual programme where the details of heating curve - time vs temperature can be observed
- Operation of furnace with end user's language. It has a capacity for 8 languages which you can choose as you like. Almost any language can be embedded so long as informed before hand
- Very ergonomical programming, simple step by step procedure
- 1600C maximum working temperature
- 2 trays (Optional 4)
- Table top design
- 1.900 watts or 3.800 Watts Power consumption (pending on the model)
- 105mms of base diameter to easily accept 95mms OD trays
- Touch botton screen under full PLC Control
- 220 Volts

## Yenadent MOS 160:

- 70 - 90 copings per sintering cycle (holds 3 levels of sintering trays)
- 4 Liter inner volume (12.5 x 14 x 15 cm, W/H/D)
- Maximum Temp. 1600°C
- Programmable PID Controller with 6 steps of definition
- Upward opening lid with safety switch
- MoSi2 heating elements, placed at sides (4 pcs)
- Furnace chamber insulated with high-purity fiber insulation
- Table top construction
- 220 Volts, 60-50 Hz

# SAMPLES



For further details please **open** [www.yenadent.com](http://www.yenadent.com)

D10 D14 D15 D43 D43B D40 D40M DC40



**Yenadent Dış. Tic. Ltd.**

Keyap Çarşı G2 Blok No:122  
34775 Y. Dudullu - İstanbul

Tel: +90 216 314 19 94 Fax: +90 (212) 381 76 68

E-mail: [info@yena.com](mailto:info@yena.com)

[www.yenadent.com](http://www.yenadent.com)