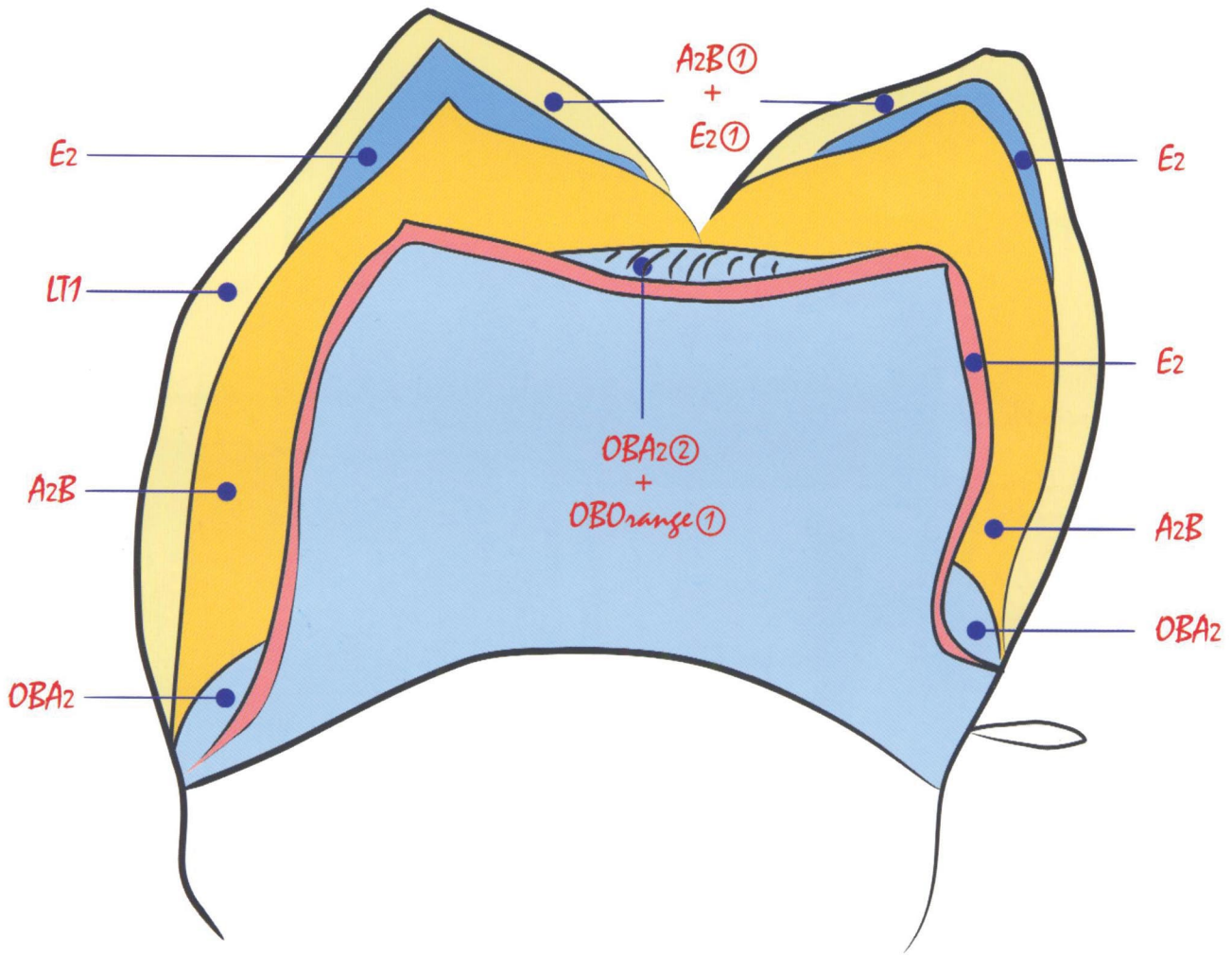
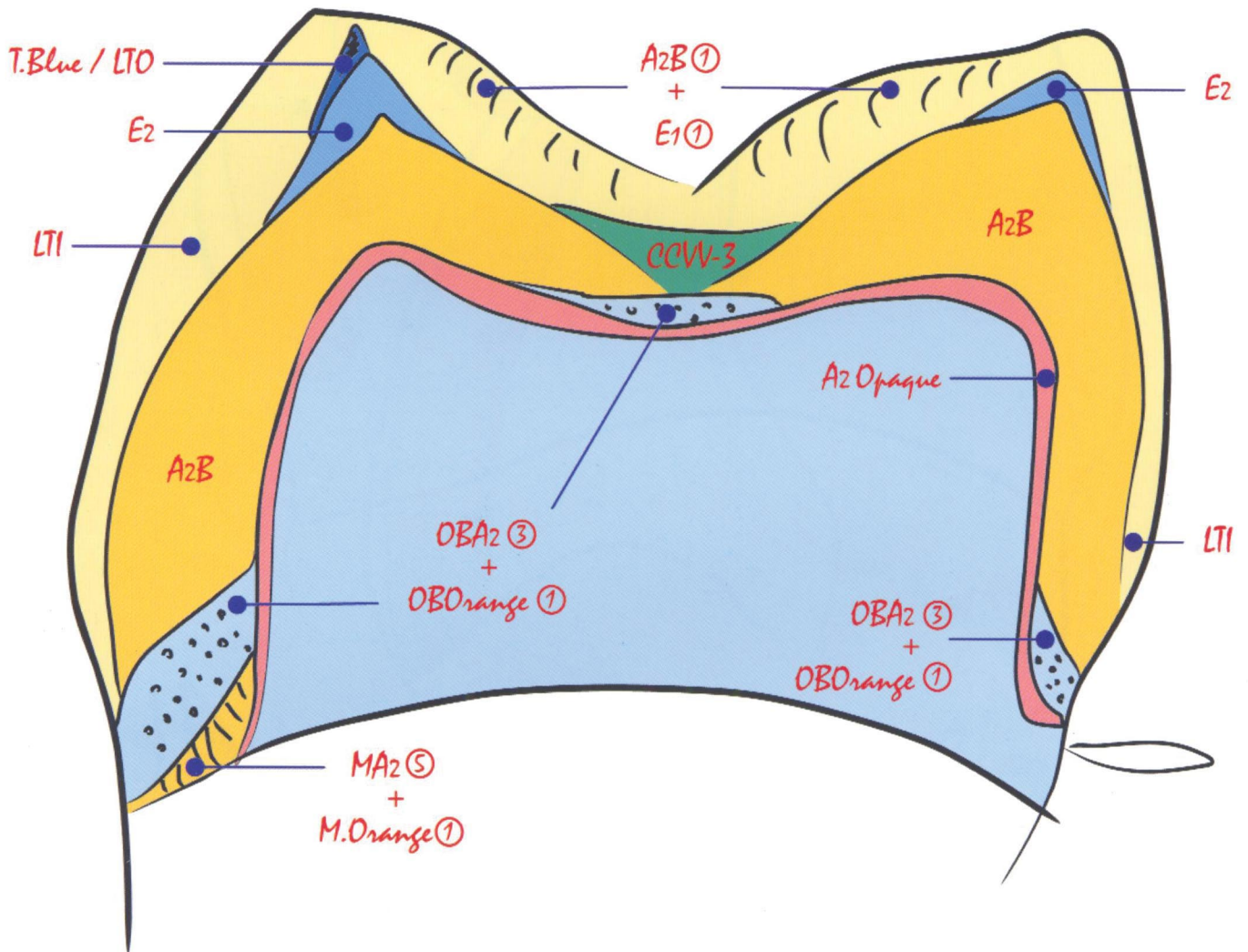


Basic layering technique.



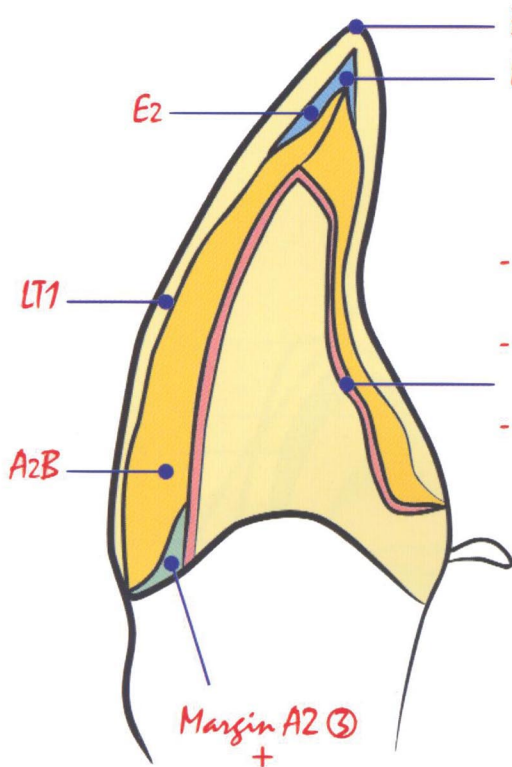
Aki

Advanced layering technique - A2



Aki

Layering technique

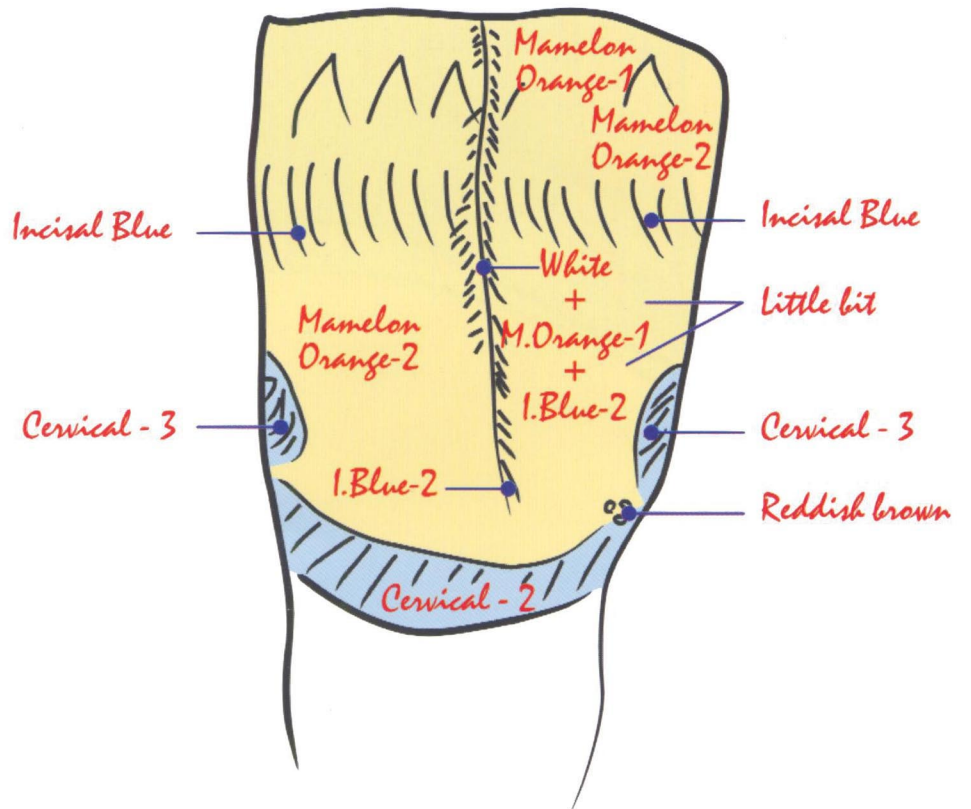


B1B ①/E1 ① /Incisal Aureola ①
LTO/ T.Blue

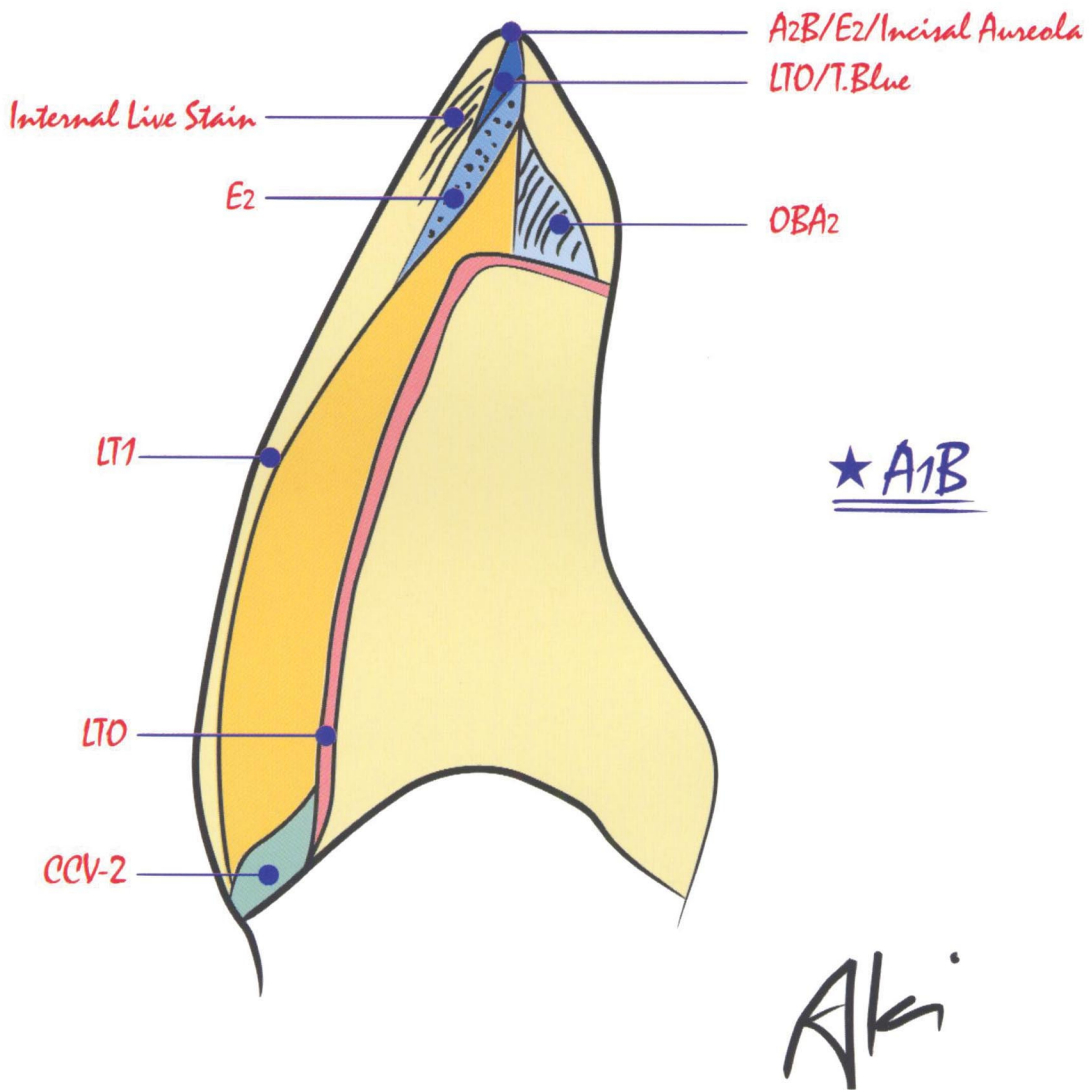
- 1. Opaque
Orange Opaque
- 2. Opaque
A2 Opaque
- 3. Opaque
Orange - Cervical Area/Not too strong
Blue - Incisal Area/Not too soft

Margin A2 ③
+
Margin Orange ①
or Peach
↓
Mix Margin Clear
2nd Application

Aki



Internal Live Stain



-
- 1st. Wash Bake (LTO) 960°C (50°C/min.)
 - 1st. Body Bake 945°C (50°C/min.)
 - 2nd. Body Bake 940°C (50°C/min.)
 - Glaze 920°C ~ 930°C (60°C ~ 70°C/min.)